

MINOR PLAT

THOMAS — SUBDIVISION

START AT THE INTERSECTION OF THE WEST R/W LINE OF HIGHWAY NO. 1 AND THE WESTERLY EXTENSION OF THE SOUTH LINE OF LOT 93, GOMEZ GRANT WEST OF THE INDIAN RIVER PLAT BK. 1, PAGE 61, RECORDS OF PALM BEACH COUNTY, NOW MARTIN COUNTY. FOR THE POINT OF BEGINNING. THENCE CONTINUE TO RUN WEST ALONG SAID EXTENSION SOUTH LINE OF LOT 93 A DISTANCE 200'; THENCE RUN NORTH PARALLEL TO U.S. 1 A DISTANCE OF 276.6'; THENCE RUN EAST PARALLEL TO SAID SOUTH LINE A DISTANCE OF 200'; THENCE RUN SOUTH A DISTANCE OF 276.6 TO THE POINT OF BEGINNING.

FEBRUARY 27, 1973

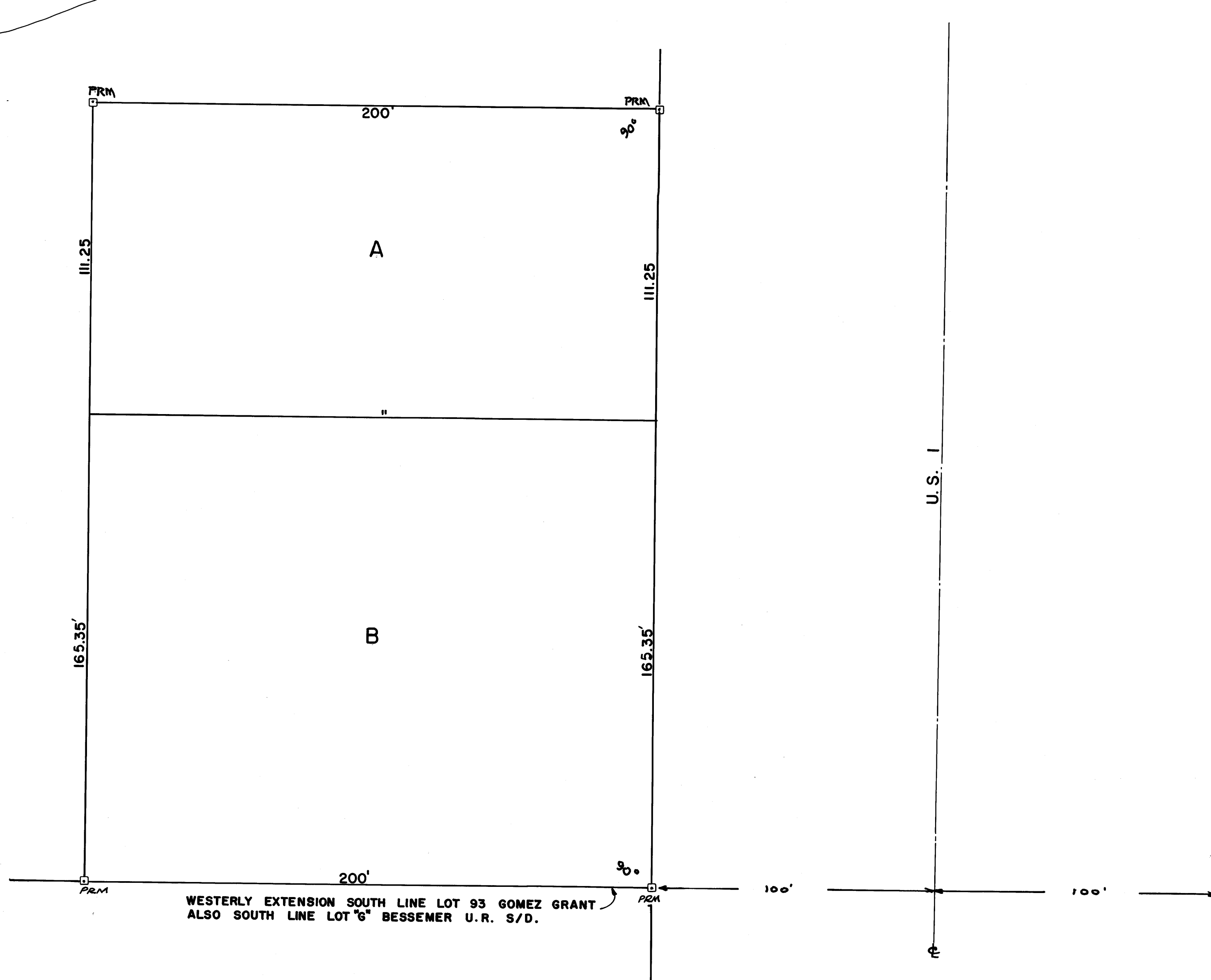
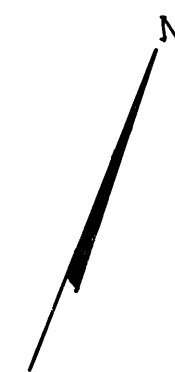
SCALE 1" = 30'

I, LOUISE V. ISAACS, CLERK OF THE CIRCUIT COURT OF MARTIN COUNTY, FLORIDA, HEREBY CERTIFY THAT THIS PLAT WAS FILED FOR RECORD IN PLAT BK. 5, PAGE 65, MARTIN COUNTY, FLORIDA, PUBLIC RECORDS, THIS 4 DAY OF APRIL 1973.

LOUISE V. ISAACS
CIRCUIT COURT
MARTIN COUNTY, FLORIDA
BY *Lois V. Isaacs*
DEPUTY CLERK

FILE NO. 190291

LAKESIDE MOBILE HOME VILLAGE



NOT DIVIDED

CERTIFICATE OF OWNERSHIP

STATE OF FLORIDA
COUNTY OF MARTIN

LIL SAINTS PROPERTIES, INC., A FLORIDA CORPORATION, BY AND THROUGH ITS UNDERSIGNED OFFICERS DOES HEREBY CERTIFY THAT IT IS THE OWNER OF THE PROPERTY DESCRIBED HEREON.

DATED: THIS 27 DAY OF Feb, 1973.

ATTEST:
Gay K. Rose
GAY ROSE, SECRETARY

Lil Saint Properties Inc.
LIL SAINTS PROPERTIES, INC.
Lawrence J. Timon
BY: LAWRENCE J. TIMON, PRES.

CERTIFICATION

STATE OF FLORIDA
COUNTY OF MARTIN

I, RANDELL E. FISHER, DO HEREBY CERTIFY THAT THIS PLAT OF THOMAS — SUBDIVISION IS A TRUE AND CORRECT REPRESENTATION OF THE LANDS SURVEYED, THAT THE SURVEY WAS MADE UNDER MY SUPERVISION, AND THAT THE SURVEY DATA COMPLIES WITH ALL OF THE REQUIREMENTS OF CHAPTER 177, FLORIDA STATUTES.

Randell E. Fisher
RANDELL E. FISHER
FLORIDA SURVEYOR REG. NO. 1946

APPROVAL

STATE OF FLORIDA
COUNTY OF MARTIN

THIS PLAT IS HEREBY APPROVED BY THE UNDERSIGNED ON THE DATES INDICATED.

DATE: March 7, 1973 *Robert H. Howell* FLO. REG. 9019
COUNTY ENGINEER
April 2, 1973 *Stephen B. Calvert*
COUNTY ATTORNEY
April 2, 1973 *T. Demaree*
PLANNING DIRECTOR

RANDELL E. FISHER
SURVEYOR
STUART FLORIDA